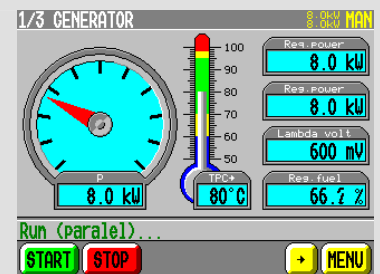


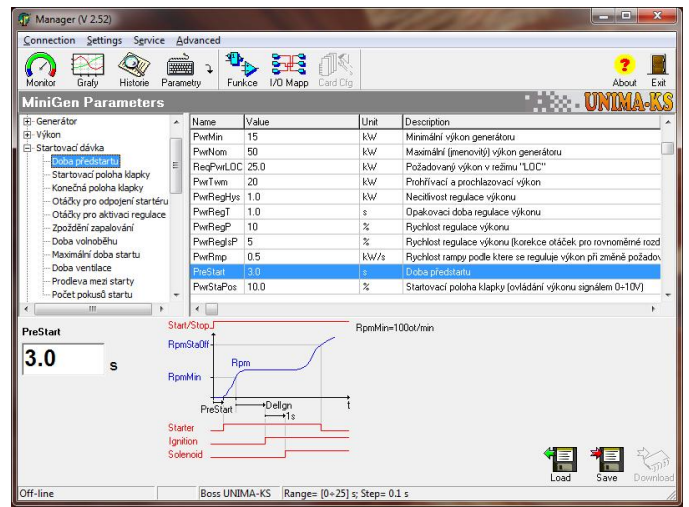
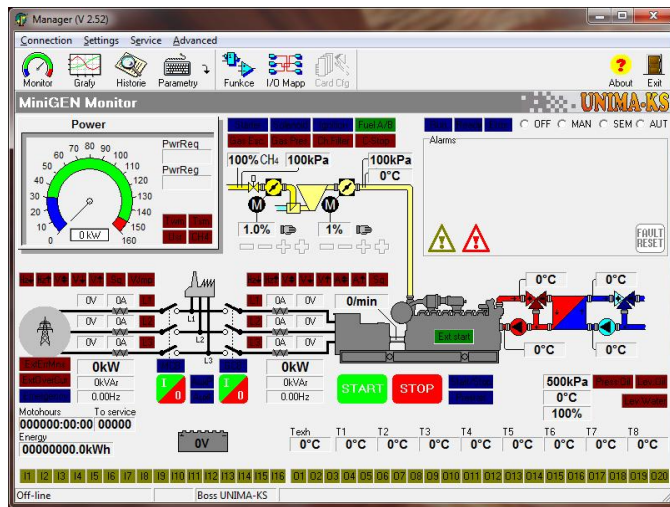


Control system for cogeneration units and other engine-generator sets with a color graphical LCD 320x240 points display with touch-screen, wide range of management, communication and configurability. Supports all modes of operation with the grid, manual, semi automatic or automatic mode, control of energy output and input from the mains, power sharing between multiple units (virtual concentrator), etc.



- Wide supply range of 10÷33VDC or 8÷24VAC
- Communication via RS-232, 2xRS-485 (UnimaBUS, ModBUS), CAN
- Configurable analog and digital inputs and outputs
- Ability to create custom algorithms with synoptic features (logic gates, flip-flops, comparators, analog addition, subtraction, analog, memory, switches, etc.)
- 16x digital input with route-checking
- 20x digital output (2xPWM output, other selectable – relay, open collector, SSR)
- 23x analog input (8xPt100, 8x-50÷50mV(thermocouple), 6x-20÷20mA, 1x-1÷1V)
- Speed measurement (read speed option from UIS)
- 2x output for woodward actuator control
- 1x output for stepper motor control (selectable coil current)
- 1x output for generator voltage (power factor) control
- Measurement 6xU, 6xI, active/reactive generator power, active/reactive power supplied to the mains
- Measurement of produced energy, configurable pulse counter (power meter, gas meter, heat meter)
- Control of the air/fuel ratio
- Parameter optional language for the CU display (currently supports Czech, English and Russian)
- Real-time counter
- History with "pretrigger" (a condensed record of the failure previous)
- Integrated speed governor
- Integrated two-stage mains protection (seal option settings), easy opportunity to test protection
- Integrated Internet-bridge (communication with a PC via a network protocol UDP, TCP)
- Data communication and cooperation with UIS (Unima ignition system) and UVR (Unima voltage regulator), access via internet bridge or RS-232 of terminal to all devices directly connected to RS-485
- Possibility to send SMS (via GSM modem)
- Possibility to control CU via SMS messages (start, stop, errors acknowledge, mode selection, the requirement to send back SMS on the status of generator, etc.)
- Fully programmable with Manager service software (easy FW upgrade through RS-232)
- System configuration from a PC with a user friendly and intuitive software
- The expansion of inputs and outputs with expansion modules

Service Program Manager is used for visualization, configuration and diagnostic of CU. The CU can be connected not only locally via RS-232, but also via dial-up connection (a modem connection) or via Internet (integrated Internet-bridge)



Using the set of UniGEN-UIS-UVR (CHP control system, ignition controller, voltage regulator) can be realized complete control of a cogeneration unit. Individual components communicate with each other via RS-485, there isn't other wires. With the integrated internet-bridge you can monitoring and setting all connected components from your PC!

